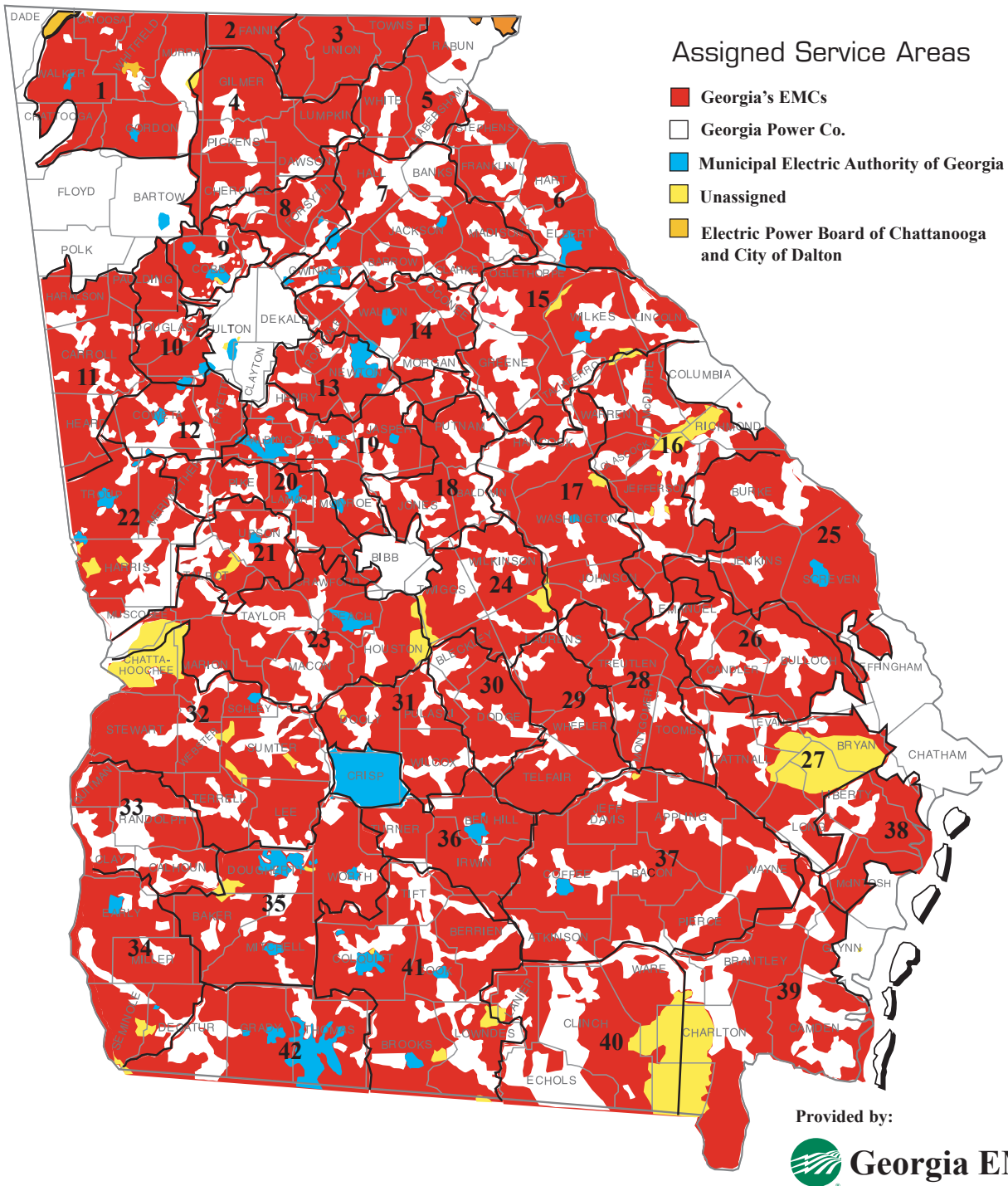


# Georgia's Electric Suppliers



## Georgia's EMCs

(from north to south)

- |                    |                     |                     |                   |                     |                |
|--------------------|---------------------|---------------------|-------------------|---------------------|----------------|
| 1. North Georgia   | 8. Sawnee           | 15. Rayle           | 22. Diverse Power | 29. Little Ocmulgee | 36. Irwin      |
| 2. Tri-State       | 9. Cobb             | 16. Jefferson       | 23. Flint         | 30. Ocmulgee        | 37. Satilla    |
| 3. Blue Ridge Mtn. | 10. GreyStone       | 17. Washington      | 24. Oconee        | 31. Middle Georgia  | 38. Coastal    |
| 4. Amicalola       | 11. Carroll         | 18. Tri-County      | 25. Planters      | 32. Sumter          | 39. Okefenokee |
| 5. Habersham       | 12. Coweta-Fayette  | 19. Central Georgia | 26. Excelsior     | 33. Pataula         | 40. Slash Pine |
| 6. Hart            | 13. Snapping Shoals | 20. Southern Rivers | 27. Canoochee     | 34. Three Notch     | 41. Colquitt   |
| 7. Jackson         | 14. Walton          | 21. Upson           | 28. Altamaha      | 35. Mitchell        | 42. Grady      |